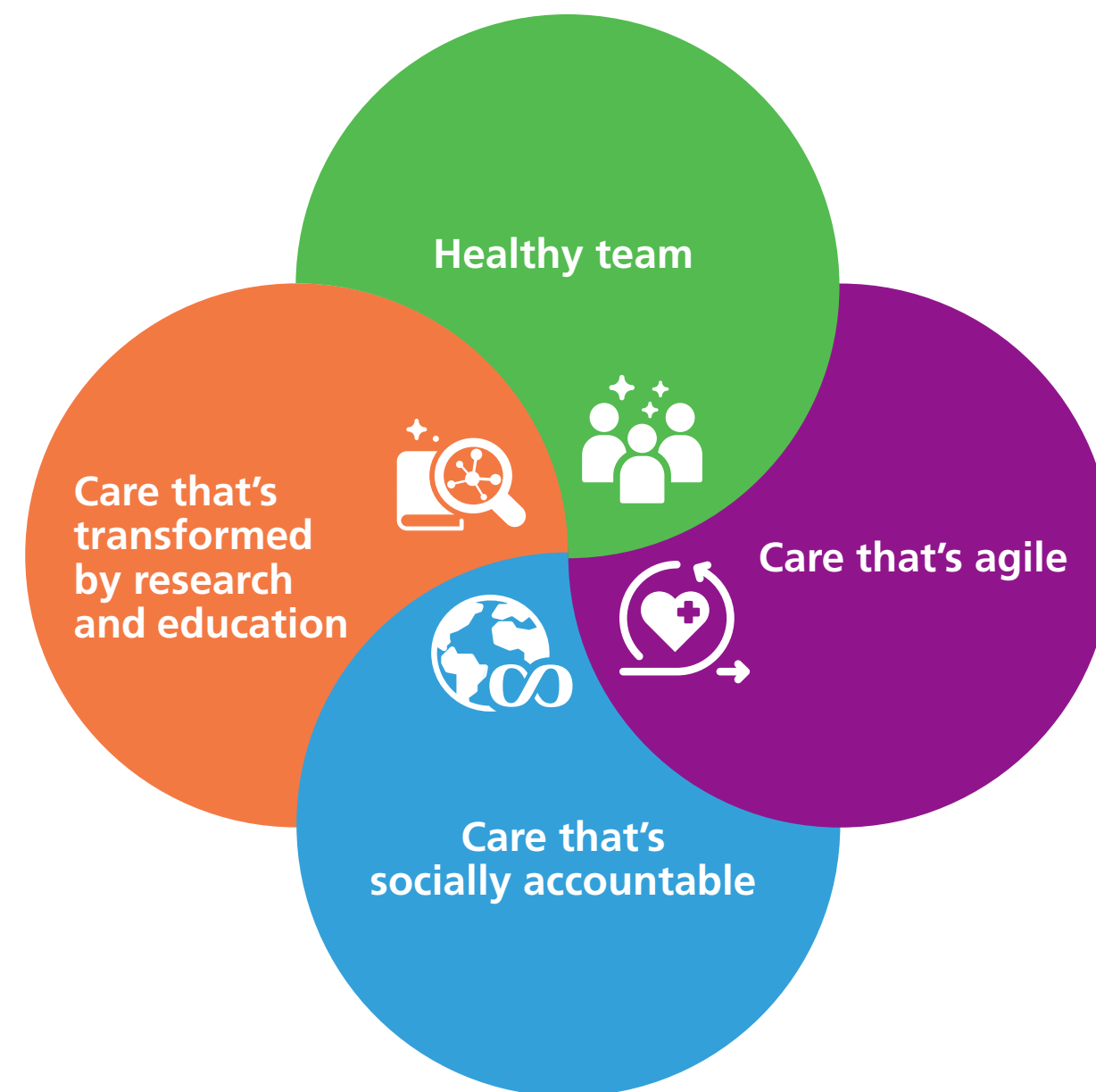


Transformative Care, Inclusive World: Holland Bloorview 2030

Read, download and share the full strategic plan at: StrategicPlan.HollandBloorview.ca



Our commitments are the lens through which we see the Holland Bloorview 2030 strategy:

Caring Safely

We will ensure the safe thing to do, is the easy thing to do as we strive for zero harm across the hospital.

Co-design

We will engage the expertise of our team, children, youth, families and alumni to co-design care, services and pathways.

IDEAA

We will build an inclusive, diverse, equitable, accessible and anti-racist environment that treats all individuals with respect and fairness.

Reach

We will share and spread knowledge with pediatric health providers locally, nationally and globally.

Sustainable

We will lead with a lens on environmental, financial and human sustainability.

Holland Bloorview 2030



From 2023

To 2030

Healthy team



Children, youth and families are everyone's motivation. Arising from the pandemic, lower staff engagement, increased burnout and moral distress is present in teams. Leaders are seeking more tools and ways to support their team. Our journey to confront organizational and systemic racism, discrimination and ableism has just begun.

Each person and team is supported and engaged, empowered and valued to do their best work. Our commitment to children, youth and families is matched by our optimism.

Care that's agile



Waitlists and wait times are too long. The healthcare system is stretched, as are our resources. Innovation and transformation is everywhere and teams are looking for the tools and time to do even more. Data is beginning to be used more consistently to inform decisions.

Holland Bloorview is a dynamic ecosystem where internal data, research and experiential knowledge are merged to inform decision-making and clinical care. Our teams have agency to continuously learn, adapt, take risks and innovate. Children, youth and families have easier access to the expertise and resources they need to transition smoothly to adulthood.

Care that's socially accountable



Systemic barriers are preventing equitable access to care. Social needs are being identified and are beginning to be addressed in some programs.

We deliver data-driven, equity-informed, services when and where families need them. The healthcare system prioritizes the well-being of children and youth with disabilities and developmental differences.

Care that's transformed by research and education



Our new state-of-the-art research space is complete and many high-impact research findings are the norm. Over 500 students each year are trained at Holland Bloorview in a wide range of disciplines. We have the largest developmental pediatric sub-specialty program in Canada.

Novel, individualized, cutting-edge discoveries are rapidly adopted and transforming the lives of children and youth. Highly skilled experts are being trained in innovative ways and at greater rates, enabling enhanced access to developmental experts and the services they provide.